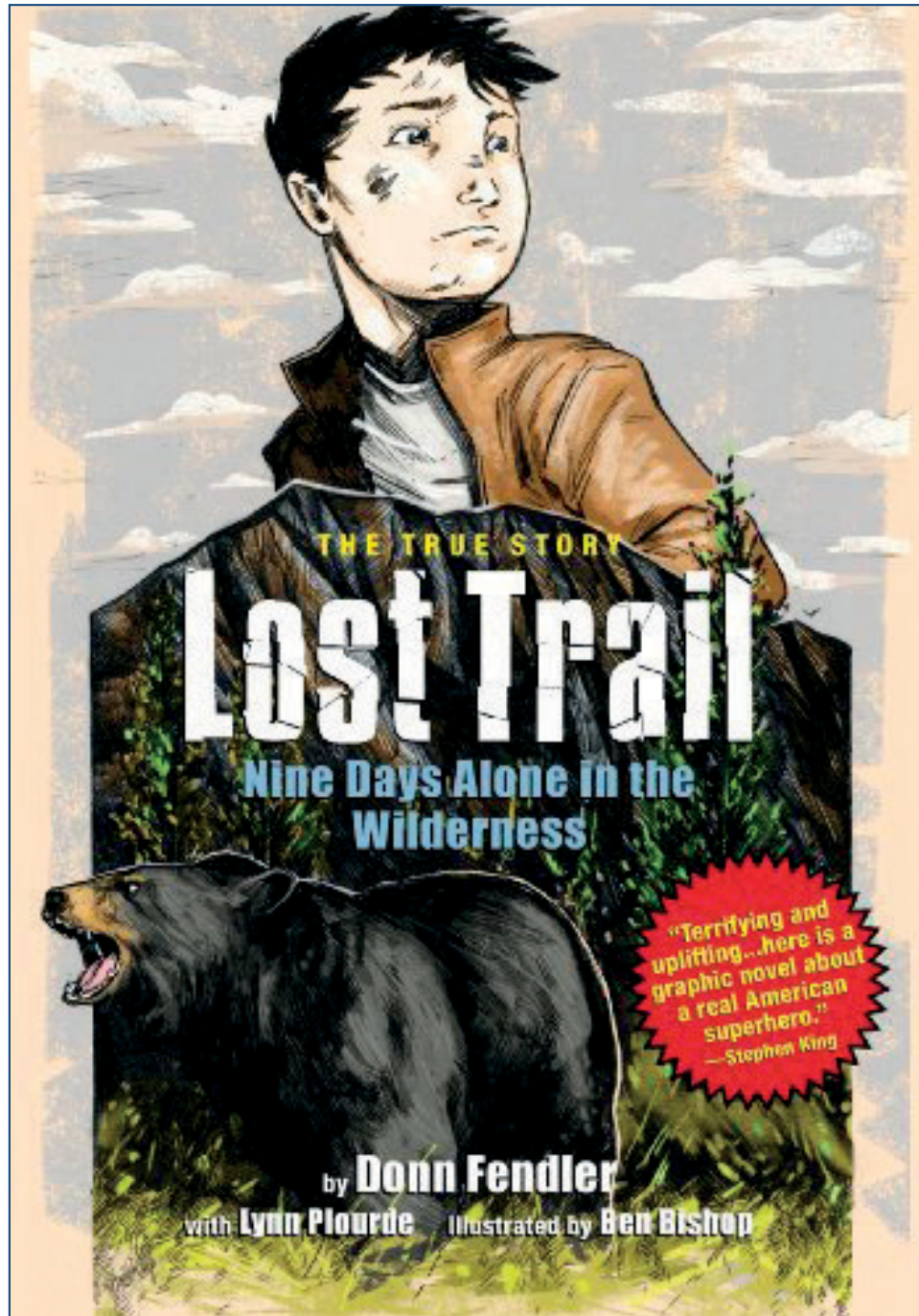


EXPLORE MORE BOOK GUIDE

This is a guide of resources, recommended activities, and a few suggested standards to help engage your students based on the book provided to support your IRW program experience.



HAVE QUESTIONS? Please contact Alison Johnson at IRW, 207-460-6828
ajohnson@islandreadersandwriters.org.



EXPLORE MORE BOOK GUIDE

Getting Started: **BEFORE** reading the book!

What is Virtual Thinking Strategies?



Watch this [video](#) to learn more about VTS.

Interested in a guided session with a trained facilitator in the VTS process?



Please contact Alison Johnson at IRW: 207-460-6828 or [email](#).

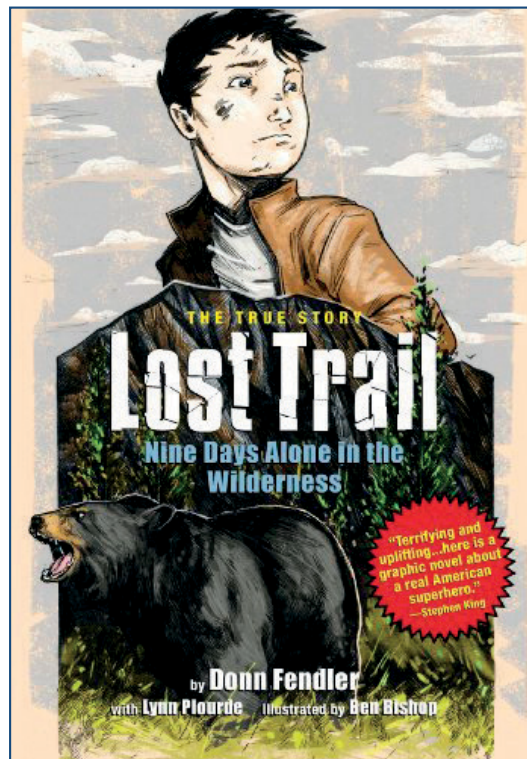
Use the Visual Thinking Strategy (VTS) questions below to engage and orient readers and to help guide a group discussion.

Take a quiet moment to observe the book jacket (cover) while thinking about the following questions.

What is going on in this picture?

What do you see that makes you say that? (provide evidence)

What more can we find?



Teachers Take note:

What words and phrases are used by students?

What details are noticed to convey ideas?

STANDARDS:

SL.1. Prepare for and participate in conversations across a range of topics, types, and forums, building on others' ideas and expressing their own.

SL.2. Integrate and evaluate information presented in diverse media and formats, including point of view, reasoning, and use of evidence and rhetoric.

R.4. Read various texts closely to determine what each text explicitly says and to make logical inferences; cite specific textual evidence to support conclusions drawn from the texts.

R.5. Provide an accurate summary of various texts; determine the central idea(s) or theme(s) and analyze its development throughout each text.

R.6. Analyze how and why individuals, events, and ideas develop and interact over the course of a text.

R.8. Analyze the structure of various texts, including how the features and components relate to each other and the whole.

R.9. Assess how perspective or purpose shapes the content and style of various texts

R.10. Evaluate the argument and specific claims in various texts.

EXPLORE MORE BOOK GUIDE

Meet Ben!

Ben Bishop is a comic creator from Maine. Ben is the illustrator of the 2011 graphic novel "Lost Trail: Nine Days Alone in the Wilderness," the story of Donn Fendler's survival on Mount Katahdin as told to Lynn Plourde. He created his first graphic novel, "Nathan the Caveman," in 2008. He also created the choose-your-own-adventure comic "The Aggregate," in 2017, which was nominated for a Ringo Award for best original graphic novel. Ben is also the series artist for "Drawing Blood," an ongoing comic by Kevin Eastman, the co-creator of "Teenage Mutant Ninja Turtles."

Ben's website: WWW.BISHART.NET.



Let's Talk

Imagine this story in reverse; a country kid gets lost in a big city. How do you think that might play out? Would it be easier or more difficult? What would be scary about it? What would the city version of "Pamola" be? If not a moose or a bear, what intriguing creature or thing might a young person have encountered in NYC in 1939?

On page 56 in the newspaper clipping it reads, "Word went out for searchers to watch for increased sightings of crows, as they likely would lead searchers to the boy's body." Why would they say this?

Mount Katahdin has claimed numerous lives whether from poor planning, poor decisions, or general misfortune. What kind of preparations are necessary to hike Katahdin? You can find out [here](#).

Percival P. Baxter had a vision to protect the land that makes up Baxter State Park for the people of Maine to enjoy for eternity.

- Who are other visionaries who have created similar protected areas in Maine?
- Does this kind of land protection ever spark controversy? Why?
- Do you think it is a worthwhile endeavor?

EXPLORE MORE BOOK GUIDE

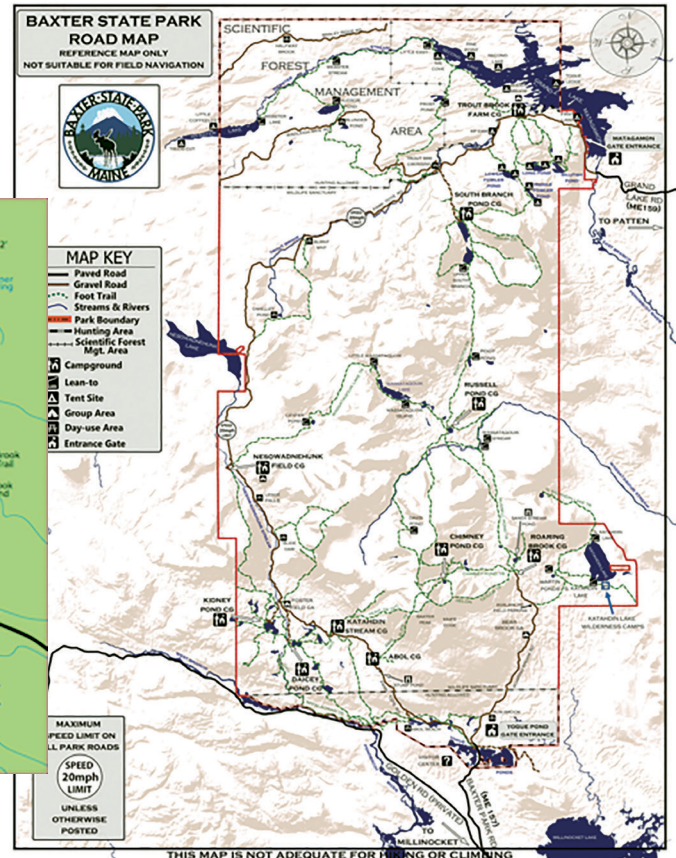
Let's Create!

Using the storyboard templates below, create one of your own. Try taking a basic and familiar story and plotting out the elements on a story board for practice. There are some printable templates to choose from below.

- [Comic Pages Big](#)
- [Comic Pages Small](#)

Using these maps try to map out Donn's trail:

- [Baxter State Park map](#)
- [Untamed Mainer map](#)



EXPLORE MORE BOOK GUIDE

Let's Dive Deeper!

[Watch an old video with Don narrating a bit about his adventure.](#)



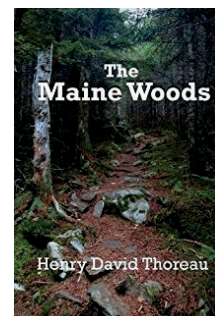
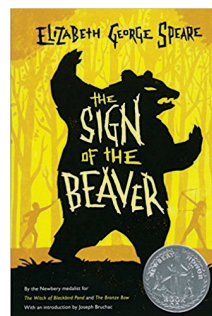
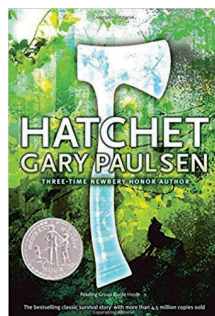
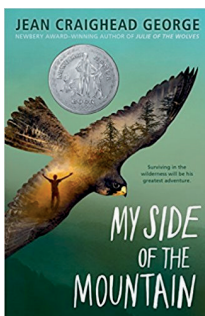
Let's Read More!

My Side of the Mountain by Jean Craighead George

Hatchet by Gary Paulsen

The Sign of the Beaver by Elizabeth George Speare

The Maine Woods by Henry David Thoreau



STANDARDS:

R.8. Analyze the structure of various texts, including how the features and components relate to each other and the whole.