

EXPLORE MORE BOOK GUIDE

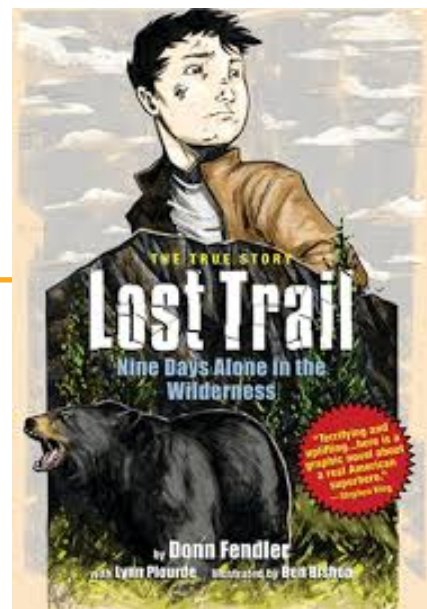
Activities, tools & resources for learning with this book!



Meet the illustrator

Ben Bishop is a comic creator from Maine. Ben is the illustrator of the 2011 graphic novel “Lost Trail: Nine Days Alone in the Wilderness,” the story of Donn Fendler’s survival on Mount Katahdin as told to Lynn Plourde. He created his first graphic novel, “Nathan the Caveman,” in 2008. He also created the choose-your-own-adventure comic “The Aggregate,” in 2017, which was nominated for a Ringo Award for best original graphic novel. Ben is also the series artist for “Drawing Blood,” an ongoing comic by Kevin Eastman, the co-creator of “Teenage Mutant Ninja Turtles.”

Ben’s [WEBSITE](#)



LET’S BEGIN! BEFORE READING THE BOOK

Use the Visual Thinking Strategy (VTS) questions below to orient readers, and to help guide a group discussion. Begin by taking a quiet moment to look closely at the book jacket, allowing time for observation and contemplation of the images.

- *What is going on in this picture?*
- *What do you see that makes you say that? (provide evidence)*
- *What more can we find?*

Watch this [VIDEO](#) for a quick VTS demo

HAVE QUESTIONS?

Please contact Alison Johnson at Island Readers & Writers, 207-460-6828 or ajohnson@islandreadersandwriters.org.

EXPLORE MORE BOOK GUIDE

LET'S TALK!

DISCUSSION QUESTIONS

Imagine this story in reverse; a country kid gets lost in a big city. How do you think that might play out? Would it be easier or more difficult? What would be scary about it? What would the city version of "Pamola" be? If not a moose or a bear, what intriguing creature or thing might a young person have encountered in NYC in 1939?

On page 56 in the newspaper clipping it reads, "Word went out for searchers to watch for increased sightings of crows, as they likely would lead searchers to the boy's body." Why would they say this?

Mount Katahdin has claimed numerous lives whether from poor planning, poor decisions, or general misfortune. What kind of preparations are necessary to hike Katahdin? You can find out [HERE](#).

Percival P. Baxter had a vision to protect the land that makes up Baxter State Park for the people of Maine to enjoy for eternity.

- Who are other visionaries who have created similar protected areas in Maine?
- Does this kind of land protection ever spark controversy? Why?
- Do you think it is a worthwhile endeavor?

LET'S CREATE (AND DO)! Book-Inspired Art

Using the storyboard templates below, create one of your own. Try taking a basic and familiar story and plotting out the elements on a story board for practice. There are some printable templates to choose from below.

Template 1 Template 2

STANDARDS

Covered throughout this Explore More Book Guide:

SL.1. Prepare for and participate in conversations across a range of topics, types, and forums, building on others' ideas and expressing their own.

SL.2. Integrate and evaluate information presented in diverse media and formats, including point of view, reasoning, and use of evidence and rhetoric.

SL.3 Present information and supporting evidence appropriate to task, purpose, and audience so listeners can follow the line of reasoning and incorporate multimedia when appropriate.

R.4. Read various texts closely to determine what each text explicitly says and to make logical inferences; cite specific textual evidence to support conclusions drawn from the texts.

R.5 Provide an accurate summary of various texts; determine the central idea(s) or theme(s) and analyze its development throughout each text.

R.6. Analyze how and why individuals, events, and ideas develop and interact over the course of a text.

R.8 Analyze the structure of various texts, including how the features and components relate to each other and the whole.

R.9. Assess how perspective or purpose shapes the content and style of various texts.

A2 Literary Texts- Students read fiction, nonfiction, drama, and poetry, within a grade appropriate span of text complexity.

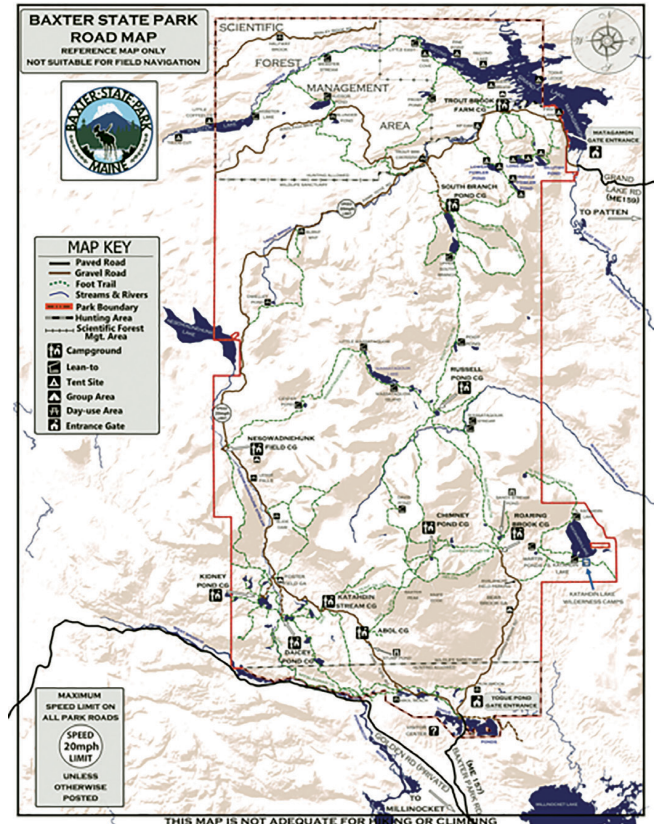
Emphasis on History

EXPLORE MORE BOOK GUIDE

LET'S DIVE DEEPER! Explore More

Using these maps try to map out Donn's trail:

- Baxter State Park map
- Untamed Mainer map



[Watch an old video with Don narrating his adventure.](#)

LET'S READ MORE! Text to Text Connections

