

# EXPLORE MORE BOOK GUIDE

Activities, tools & resources for learning with this book!



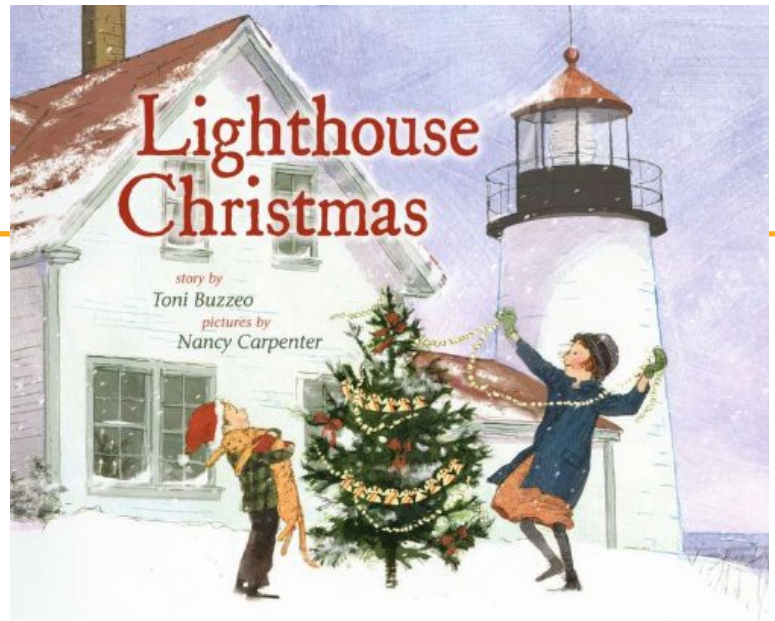
## Meet Toni

Toni Buzzeo has authored twenty-eight picture books for children, including the 2013 Caldecott Honor Book and New York Times bestseller *One Cool Friend*, illustrated by David Small. She publishes both fiction and nonfiction. Endlessly enthusiastic, Toni draws on her career experiences as an elementary school librarian in crafting her books and speaking with audiences of children in schools and libraries.

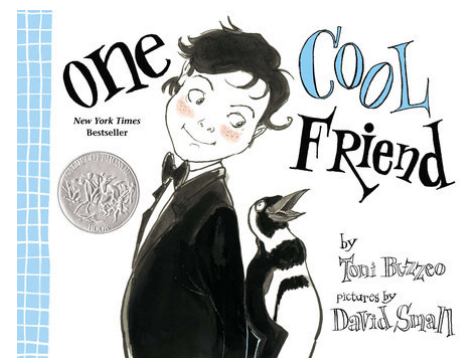
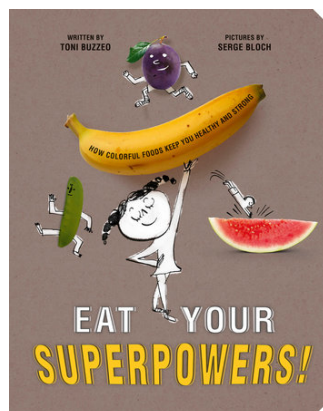
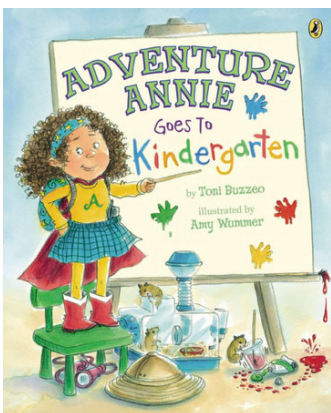
Learn more about Toni: <https://tonibuzzeo.com/>

### FUN FACT:

IRW began piloting school programs in 2004 and Toni Buzzeo was our first author visit.



## Just a few more from Toni



# EXPLORE MORE BOOK GUIDE

LET'S BEGIN! BEFORE READING THE BOOK

Use the Visual Thinking Strategy (VTS) questions below to orient readers, and to help guide a group discussion. Begin by taking a quiet moment to look closely at the book jacket, allowing time for observation and contemplation of the images.

- *What is going on in this picture?*
- *What do you see that makes you say that? (provide evidence)*
- *What more can we find*

Watch this [VIDEO](#) for a quick VTS demo

## HAVE QUESTIONS?

Please contact Alison Johnson at Island Readers & Writers  
207-460-6828 or [ajohnson@islandreadersandwriters.org](mailto:ajohnson@islandreadersandwriters.org)

## LET'S TALK! DISCUSSION QUESTIONS

*LIGHTHOUSE CHRISTMAS* tells the story of a very isolated, but ultimately very happy, Christmas. Discuss some of your own Christmas holidays? How can you relate to the story?

What are some of your family traditions?

Invite students to choose a holiday they celebrate in their families. Create a list of the ways they currently celebrate the holiday, including special foods, songs, decorations, and social gatherings. Next, invite them to imagine that they are confined on a distant island, as Frances and Peter are, and to imagine substitutions for their traditional activities.

## STANDARDS

*Covered throughout this Explore More Book Guide:*

*SL.1. Prepare for and participate in conversations across a range of topics, types, and forums, building on others' ideas and expressing their own.*

*SL.2. Integrate and evaluate information presented in diverse media and formats, including point of view, reasoning, and use of evidence and rhetoric.*

*SL.3 Present information and supporting evidence appropriate to task, purpose, and audience so listeners can follow the line of reasoning and incorporate multimedia when appropriate.*

*R.4. Read various texts closely to determine what each text explicitly says and to make logical inferences; cite specific textual evidence to support conclusions drawn from the texts.*

*R.5 Provide an accurate summary of various texts; determine the central idea(s) or theme(s) and analyze its development throughout each text.*

*R.6. Analyze how and why individuals, events, and ideas develop and interact over the course of a text.*

*R.8 Analyze the structure of various texts, including how the features and components relate to each other and the whole.*

*R.9. Assess how perspective or purpose shapes the content and style of various texts.*

## LET'S CREATE (AND DO)! Book-Inspired Art

Build a model lighthouse.

*Some materials that can be used:* Wooden thread spools, paper towel tubes, heavy paper.

Research lighthouse styles- design and paint your own color/pattern on a lighthouse (could be on paper or a wooden model)

Use “found” items to make a small gift for someone (or a pet), or create a tree ornament (scraps of paper, cloth, trimmings, ribbon, etc).

### Perspective

the techniques used to create the illusion of three-dimensional space and depth on a two-dimensional surface

Study **PERSPECTIVE** in illustrations (p 26-27) then draw something from that perspective (a tree, the ceiling, underside of a desk, looking up at a rock or fence . . .)

Think about what the sea might look like from the top of the lighthouse, draw what you see (also a perspective lesson).

Focus on the spiral shape (as seen in the lighthouse stairs)- find it in nature, other buildings, etc.

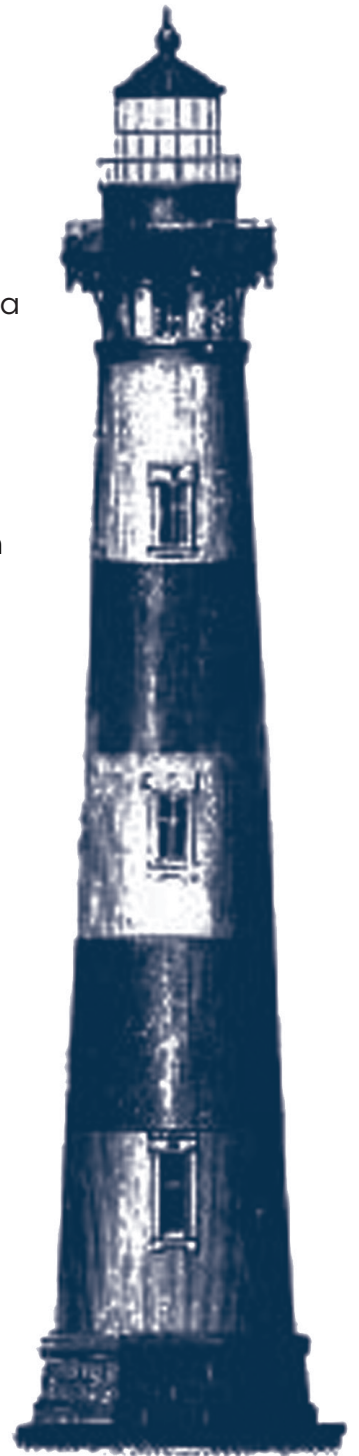
### Writing projects:

Write about traditions that are important to you in celebrating Christmas, or any holiday; what makes the holiday special for you?

Write a story explaining how the one-eared cat came to Ledge Light; why does he only have one ear?

Think about what defines a family to you- the Ledge Light family “grew” to include the sailor and the cat? Write a story about your family.

Research isolated areas (islands, deserts, Alaska . . .) and write about how holidays such as Christmas may be celebrated a little differently there. Include challenges and adaptations to traditional celebrations that would need to be overcome.

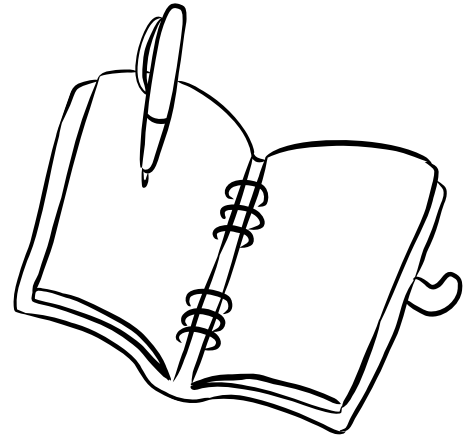




## Writing projects cont:

Frances, Peter, and their father moved to Ledge Light after the death of the children's mother- write a paragraph from each character's point of view about how that move makes them feel, what they think about the move and how it affects them.

Write an entry for the "Keeper's Journal"



## Role Play:

Brainstorm and then role play situations that might require courage or bravery.

Have teams think of creative ways to deliver Christmas presents, then role play.

Frances and Peter are the only children at Ledge Light- how do they stay busy, what kinds of things can they do for fun?

## LET'S DIVE DEEPER! Explore More

Explore and record the history of lighthouses in Penobscot Bay. Discover when they were built; who designed them; who lived in them; what determined their location; how was the beam of light produced; who owns them; what lighthouses in Penobscot Bay that are no longer in operation?

Explore Toni's **TEACHING GUIDE.**

**READER'S THEATER SCRIPT**

**WRITING GUIDE**

## LET'S READ MORE! Text to Text Connections

